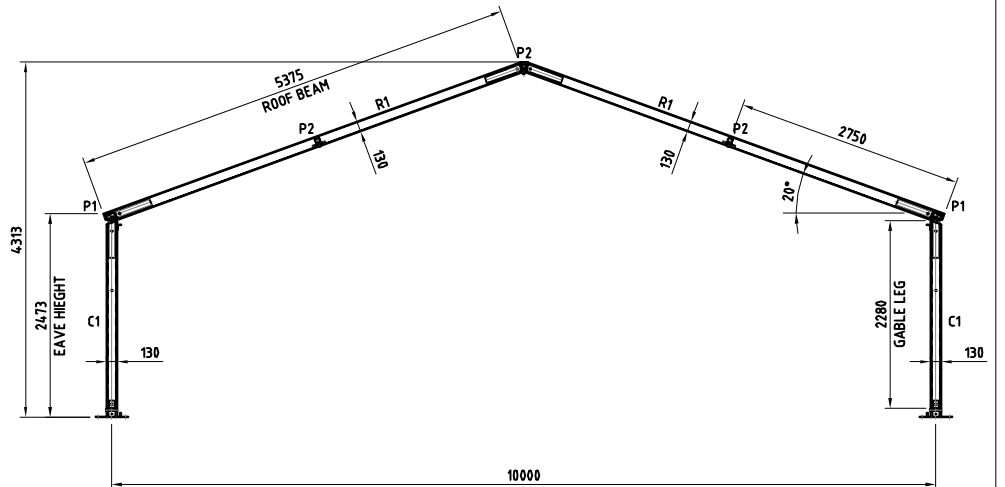
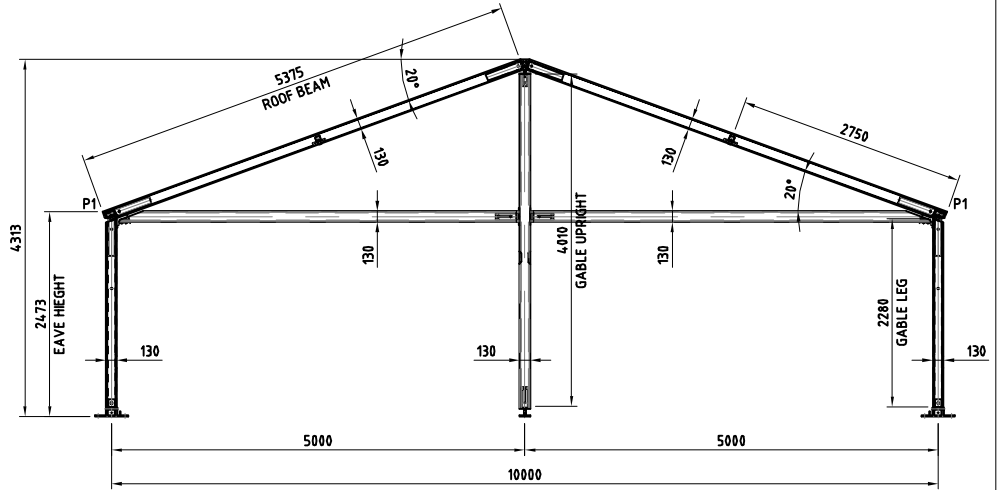
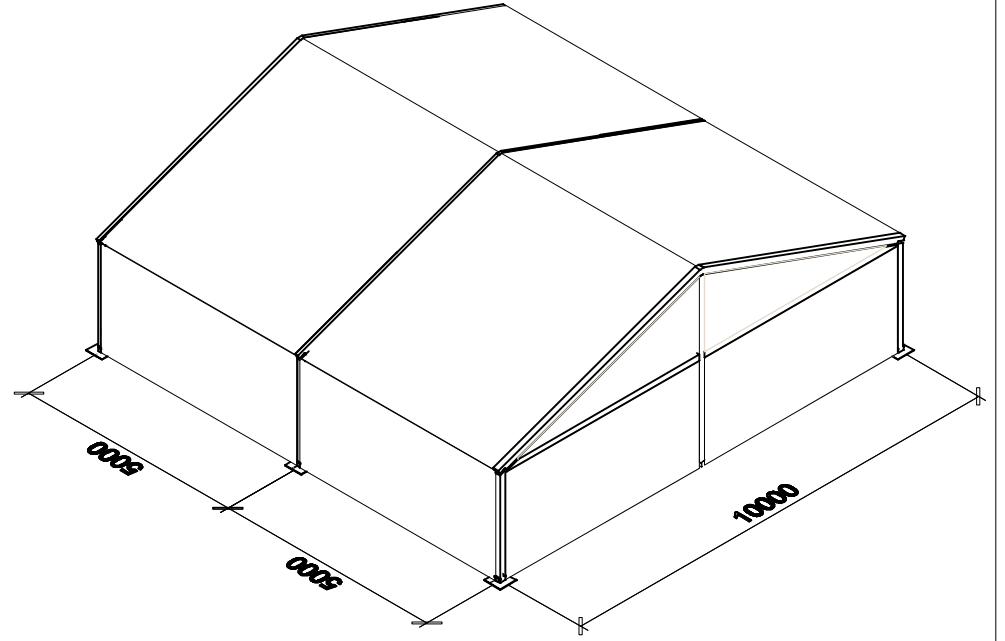




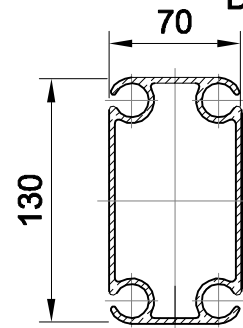
## 10m- Technical Data

ITEM	SPECIFICATION
CLEAR - SPAN WIDTH	10.130m
LEG HEIGHT	2.280m* / 2.807m / 3.380m / 3.731m
EAVE HEIGHT	2.473m* / 3.000m / 3.573m / 3.924m
RIDGE HEIGHT	4.313m* / 4.840m / 5.413m / 5.764m
ROOF PITCH	18°
BAY DISTANCE	5m
LONGEST COMPONENT	5.375m
MINIMUM TENT LENGTH	5m
MAXIMUM TENT LENGTH	NO LIMITED
MAIN PROFILE	130 x 70 x 3mm (4 - CHANNEL)
MAX.ALLOWED WINDSPEED	80km / hour 0.3kn/m <sub>2</sub>
FRAMEWORK MATERIAL	HARD PRESSED EXTRUDED ALUMINIUM 6005A-T5
COVER MATERIAL	PVC- OPAQUE FABRIC, FLAME RETARDANT AS 1530.2 -PART 3 TEMP RESISTANCE: DIN 53361

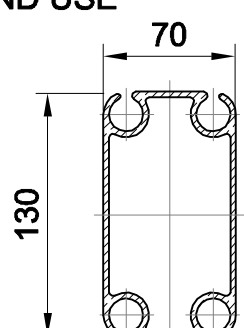
	OPTIONAL ACCESSORIES
	PVC WINDOW SIDEWALLS SPIKE ANCHORING RAIN GUTTER LINING AND CURTAIN GLASS DOOR UNITS HARD WALLING SYSTEM GLASS WALL SYSTEM TRANSPARENT PVC COVER & SIDEWALL. FLOORING SYSTEM WEIGHT PLATE



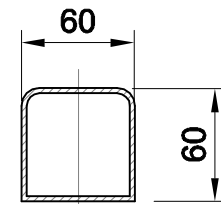
### FRAMEWORK MAIN PROFILE DIMENSION AND USE



PHC-004  
ROOF BEAMS  
SIDE LEGS



PHC-006  
GABLE UPRIGHTS  
RIDGE & EVEAS PURLINS



PHC-014  
INTERMEDIATE PURLIN