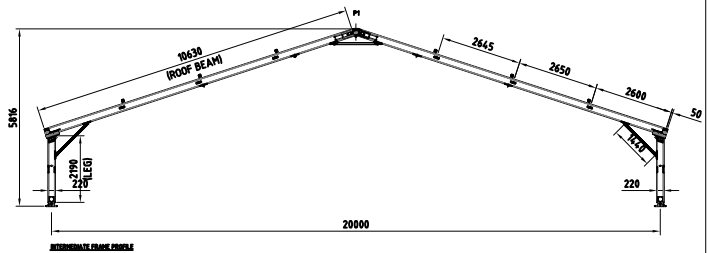
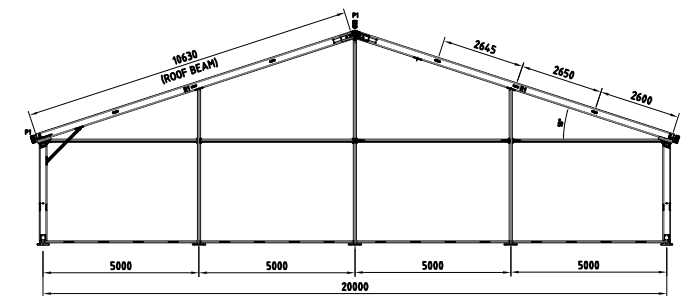


20m - Technical Data

ITEM	SPECIFICATION
CLEAR - SPAN WIDTH	20.220m
LEG HEIGHT	2.190m* / 2.807m / 3.200m / 3.731m
EAVE HEIGHT	2.518m* / 3.110m / 3.528m / 4.034m
RIDGE HEIGHT	5.816m* / 6.408m / 6.826m / 7.332m
ROOF PITCH	18°
BAY DISTANCE	5m
LONGEST COMPONENT	10.630m
MINIMUM TENT LENGTH	20m
MAXIMUM TENT LENGTH	NO LIMITED
MAIN PROFILE	220x100x4mm (4 - CHANNEL)
MAX.ALLOWED WINDSPEED	80km / hour 0.3kn/m ₂
FRAMEWORK MATERIAL	HARD PRESSED EXTRUDED ALUMINIUM 6005A-T5
COVER MATERIAL	PVC- OPAQUE FABRIC, FLAME RETARDANT AS 1530.2 -PART 3 TEMP RESISTANCE: DIN 53361

	OPTIONAL ACCESSORIES
	PVC WINDOW SIDEWALLS SPIKE ANCHORING RAIN GUTTER LINING AND CURTAIN GLASS DOOR UNITS HARD WALLING SYSTEM GLASS WALL SYSTEM TRANSPARENT PVC COVER & SIDEWALL. FLOORING SYSTEM WEIGHT PLATE



FRAMEWORK MAIN PROFILE DIMENSION AND USE

