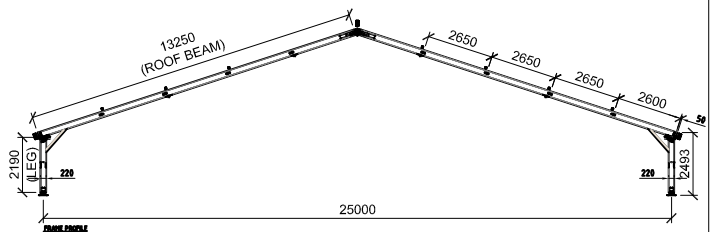
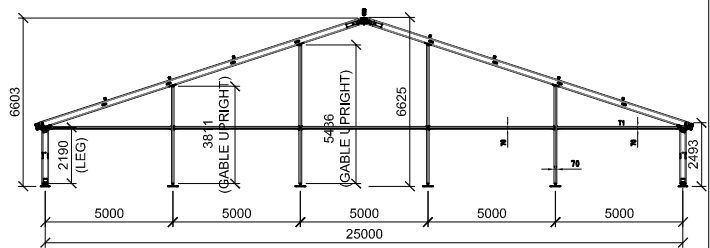
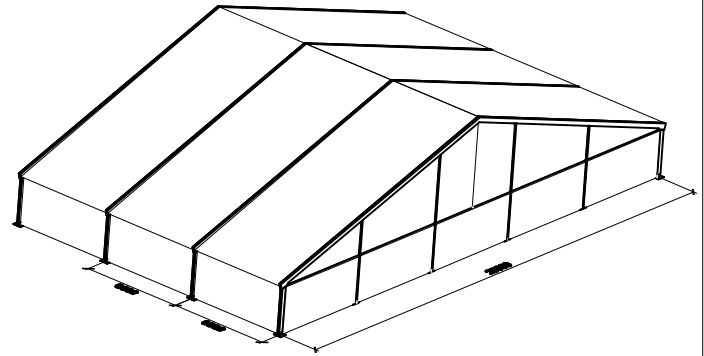




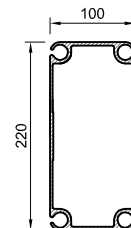
25m - Technical Data -

ITEM	SPECIFICATION
CLEAR - SPAN WIDTH	2.5220m
LEG HEIGHT	2.493m* / 3.110m / 3.225m / 4.016m
EAVE HEIGHT	2.190m* / 2.807m / 3.528m / 4.317m
RIDGE HEIGHT	6.603*m / 7.220m / 7.638m / 8.428m
ROOF PITCH	18Ø
BAY DISTANCE	5m
LONGEST COMPONENT	13.250m
MINIMUM TENT LENGTH	5m
MAXIMUM TENT LENGTH	NO LIMITED
MAIN PROFILE	220 x 100 x 3mm (4 - CHANNEL)
MAX.ALLOWED WINDSPEED	80km / hour 0.3kn/m ₂
FRAMEWORK MATERIAL	HARD PRESSED EXTRUDED ALUMINIUM 6005A-T5
COVER MATERIAL	PVC- OPAQUE FABRIC, FLAME RETARDANT AS 1530.2 -PART 3 TEMP RESISTANCE: DIN 53361

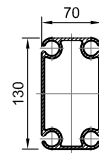
	OPTIONAL ACCESSORIES
	PVC WINDOW SIDEWALLS SPIKE ANCHORING RAIN GUTTER LINING AND CURTAIN GLASS DOOR UNITS HARD WALLING SYSTEM GLASS WALL SYSTEM TRANSPARENT PVC COVER & SIDEWALL. FLOORING SYSTEM WEIGHT PLATE



FRAMEWORK MAIN PROFILE
DIMENSION AND USE



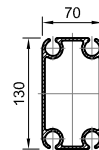
PHC-012
ROOF BEAMS
SIDE LEGS



PHC-006
GABLE UPRIGHTS
RIDGE & EAVES PURLINS



PHC-014
INTERMEDIALE PURLIN



PHC-004
GABLE CONNECTOR