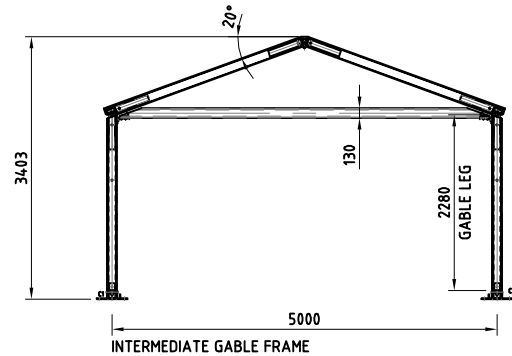
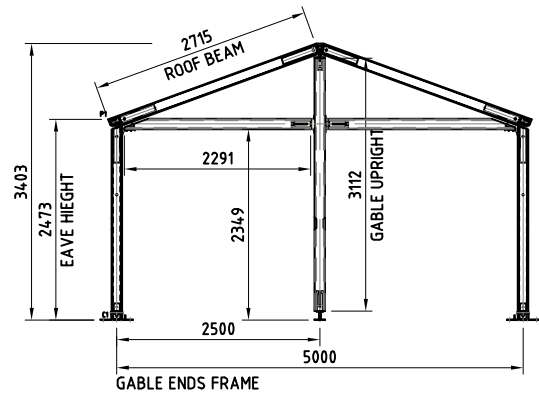
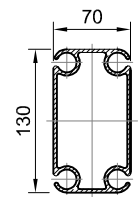


## 5m - Technical Data

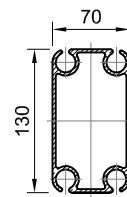
ITEM	SPECIFICATION
CLEAR - SPAN WIDTH	5.130m
LEG HEIGHT	2.4m* / 3.0m / 3.5m
EAVE HEIGHT	2.473m* / 3.000m / 3.573m
RIDGE HEIGHT	3.403*m / 3.930m / 4.503m
ROOF PITCH	20°
BAY DISTANCE	5m
LONGEST COMPONENT	4.9m
MINIMUM TENT LENGTH	5m
MAXIMUM TENT LENGTH	NO LIMITED
MAIN PROFILE	130 x 70 x 3mm (4 - CHANNEL)
MAX.ALLOWED WINDSPEED	80km / hour 0.3kn/m <sub>2</sub>
FRAMEWORK MATERIAL	HARD PRESSED EXTRUDED ALUMINIUM 6005A-T5
COVER MATERIAL	PVC- OPAQUE FABRIC, FLAME RETARDANT AS 1530.2 -PART 3 TEMP RESISTANCE: DIN 53361



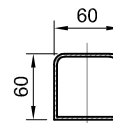
### FRAMEWORK MAIN PROFILE DIMENSION AND USE



PHC-004  
ROOF BEAMS  
SIDE LEGS



PHC-006  
GABLE UPRIGHTS  
RIDGE & EAVES PURLINS



PHC-014  
INTERMEDIATE PURLIN

### OPTIONAL ACCESSORIES

PVC WINDOW SIDEWALLS  
SPIKE ANCHORING  
RAIN GUTTER  
LINING AND CURTAIN  
GLASS DOOR UNITS  
HARD WALLING SYSTEM  
GLASS WALL SYSTEM  
TRANSPARENT PVC COVER & SIDEWALL.  
FLOORING SYSTEM  
WEIGHT PLATE